

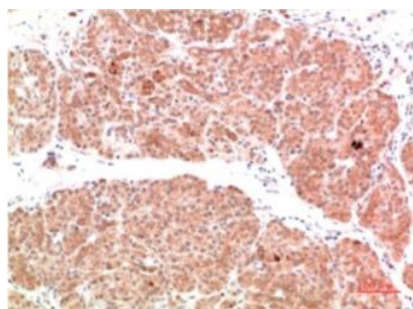
# PI3 Kinase P85 Rabbit Polyclonal Antibody

OPR319

<b>Reactivity</b>	H, M, R	<b>Storage</b>	-20°C, Avoid freeze / thaw cycles
<b>Host</b>	Rabbit	<b>Applications</b>	IHC
<b>Isotype</b>	IgG	<b>Concentration</b>	1 mg/mL

**Note:** Centrifuge before opening to ensure complete recovery of vial contents.

## Images



Immunohistochemical analysis of paraffin-embedded Human Pancreas Carcinoma Tissue using PI3 Kinase P85 Rabbit Polyclonal Antibody diluted at 1:500.

## Immunogen Information

<b>Immunogen</b>	Recombinant Protein
<b>Swissprot</b>	P27986
<b>Synonyms</b>	GRB1 antibody, p85 alpha antibody, PI3K antibody, PIK3R1 antibody

## Product Information

<b>Observed MW</b>	85kDa
<b>Buffer</b>	PBS containing 50% glycerol and 0.02% sodium azide.pH 7.4.
<b>Dilution</b>	IHC: 1/200 - 500

Other applications have not been tested. Optimal dilutions/concentrations should be determined by the end user

## Background

Phosphatidylinositol-4,5-bisphosphate 3-kinase (also called phosphatidylinositide 3-kinases, phosphatidylinositol-3-kinases, PI 3-kinases, PI(3)Ks, PI-3Ks or by the HUGO official stem symbol for the gene family, PI3K(s)) are a family of enzymes involved in cellular functions such as cell growth, proliferation, differentiation, motility, survival and intracellular trafficking, which in turn are involved in cancer.

## Research Use

For research use only, not for use in diagnostic procedure

## Legend

Applications: WB-Western Blot; IHC-Immunohistochemistry; IF-Immunofluorescence; IP-Immunoprecipitation; FC-Flow cytometry; ChIP-Chromatin Immunoprecipitation

Reactivity: H-Human; R-Rat; M-Mouse; Mk-Monkey; Dg-Dog; Ch-Chicken; Hm-Hamster; Rb-Rabbit; Sh- Sheep; Pg-Pig; Z- Zebrafish; X-Xenopus; C-Cow,Fs- fish.

Please contact Origin Diagnostics and Research for further assistance

[www.originlab.in](http://www.originlab.in)

[info@originlab.in](mailto:info@originlab.in)

+91-7736237778