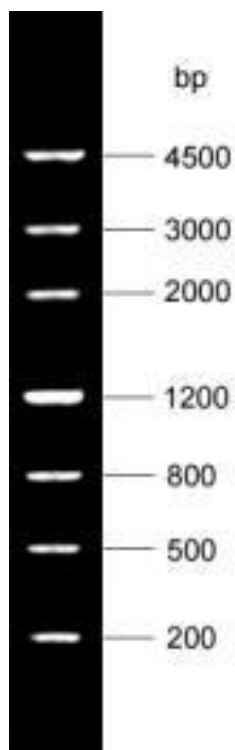


# 200bp DNA Ladder

OMD115

**Description:** The ladder consists of 7 DNA bands that are suitable for molecular weight standards for agarose gel electrophoresis. The product is ready-to-use, it is premixed with 1X loading buffer for direct loading. The ladder is composed of seven individual DNA fragments (in base pairs): 4500, 3000, 2000, 1200, 800, 500, and 200.



1.0 - 2.0% agarose  
5 $\mu$ L product

## Concentration

Reference band (1200bp): 100ng/5 $\mu$ L Other bands:  
50ng/5 $\mu$ L

**Volume:** 250 $\mu$ L

## Protocol

- 1) Directly load 5 $\mu$ L of this product on the agarose gel (load 1 $\mu$ L per 1mm gel lane).
- 2) Electrophoresis condition: 1-2% agarose gel, and 4-10V/cm.
- 3) DNA marker can be visualized using Ethidium bromide under UV light

## Recommendations

- 1) Directly use, do not heat before loading.
- 2) Use new agarose gel and change electrophoresis buffer in time, so that it will not affect the electrophoresis results.

**Storage:** Store at -20 $^{\circ}$ C for 2 years.