

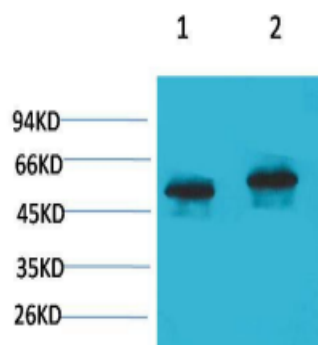
# P53 Rabbit Polyclonal Antibody

OPR173

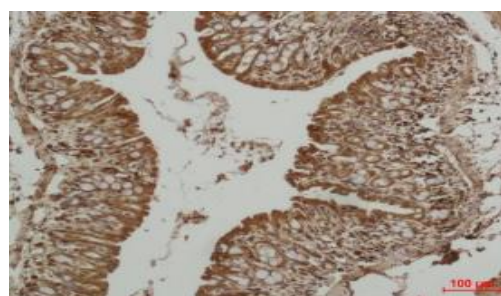
<b>Reactivity</b>	M,R	<b>Storage</b>	-20°C,Avoid freeze/ thaw cycles
<b>Host</b>	Rabbit	<b>Applications</b>	WB;IHC
<b>Isotype</b>	IgG	<b>Concentration</b>	1 mg/mL

Note: Centrifuge before opening to ensure complete recovery of vial contents.

## Images



Western blot analysis of 1) Mouse Brain Tissue, 2) Rat Brain Tissue with p53 Rabbit polyclonal Antibody diluted at 1:2,000.



Immunohistochemical analysis of paraffin-embedded Mouse Colon Tissue using p53 Rabbit polyclonal Antibody diluted at 1:500.

## Immunogen Information

<b>Immunogen</b>	Synthetic Peptide
<b>Swissprot</b>	P04637
<b>Synonyms</b>	Cellular tumor antigen p53 antibody, Cys 51 stop antibody, Tp53 antibody, Tumor protein p53 antibody

## Product Information

<b>Observed MW</b>	53 kDa
<b>Buffer</b>	PBS with 0.02% sodium azide and 50% glycerol pH 7.4.
<b>Dilution</b>	WB: 1:1000-2000;IHC:1:500-1000

Other applications have not been tested. Optimal dilutions/concentrations should be determined by the end user.

## Background

p53 plays a major role in the cellular response to DNA damage and other genomic aberrations. The activation of p53 can lead to either cell cycle arrest and DNA repair, or apoptosis. p53 is phosphorylated at multiple sites in vivo and by several different protein kinases in vitro.

## Research Use

For research use only, not for use in diagnostic procedure.

## Legend

Applications: WB-Western Blot; IHC-Immunohistochemistry; IF-Immunofluorescence; IP-Immunoprecipitation; FC-Flow cytometry;ChIP-Chromatin Immunoprecipitation  
 Reactivity: H-Human; R-Rat; M-Mouse; Mk-Monkey; Dg-Dog; Ch-Chicken; Hm-Hamster; Rb-Rabbit; Sh- Sheep; Pg-Pig; Z-Zebrafish;X-Xenopus; C-Cow.

Please contact Origin Diagnostics and Research for further assistance

[www.originlab.in](http://www.originlab.in)

[info@originlab.in](mailto:info@originlab.in)

+91-7736237778