

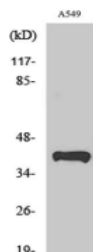
Peroxin 14 Rabbit Polyclonal Antibody

OPR3178

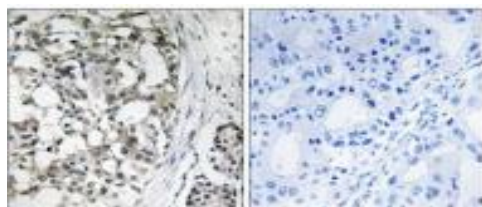
Reactivity	H,M,R	Storage	-20°C, Avoid freeze/ thaw cycles
Host	Rabbit	Applications	WB;IHC;IF;ELISA
Isotype	IgG	Concentration	1 mg/mL

Note: Centrifuge before opening to ensure complete recovery of vial contents.

Images



Western Blot analysis of various cells using Peroxin 14 Polyclonal Antibody.



Immunohistochemistry analysis of paraffin-embedded human breast carcinoma tissue, using PEX14 Antibody. The picture on the right is blocked with the synthesized peptide.

Immunogen Information

Immunogen The antiserum was produced against synthesized peptide derived from human PEX14.

AA range:117-166

Swissprot O75381

Synonyms PEX14; Peroxisomal membrane protein PEX14; PTS1 receptor-docking protein; Peroxin-14; Peroxisomal membrane anchor protein PEX14

Product Information

Observed MW 38 kDa

Buffer PBS containing 50% glycerol, 0.5% BSA and 0.02% sodium azide

Dilution WB:1/500-1/2000;IHC:1/100-1/300;ELISA:1/20000

Other applications have not been tested. Optimal dilutions/concentrations should be determined by the end user.

Background

Peroxisomal biogenesis factor 14(PEX14) Homo sapiens this gene encodes an essential component of the peroxisomal import machinery. The protein is integrated into peroxisome membranes with its C-terminus exposed to the cytosol, and interacts with the cytosolic receptor for proteins containing a PTS1 peroxisomal targeting signal. The protein also functions as a transcriptional corepressor and interacts with a histone deacetylase. A mutation in this gene results in one form of Zellweger syndrome.

Research Use

For research use only, not for use in diagnostic procedure.

Legend

Applications: WB-Western Blot; IHC-Immunohistochemistry; IF-Immunofluorescence; IP-Immunoprecipitation; FC-Flow cytometry;ChIP-Chromatin Immunoprecipitation

Reactivity: H-Human; R-Rat; M-Mouse; Mk-Monkey; Dg-Dog; Ch-Chicken; Hm-Hamster; Rb-Rabbit; Sh- Sheep; Pg-Pig; Z-Zebrafish;X-Xenopus; C-Cow.

Please contact Origin Diagnostics and Research for further assistance

www.originlab.in

info@originlab.in

+91-7736237778