

LC3B Rabbit Polyclonal Antibody

OPR174

Reactivity H,M,R

Host Rabbit

Isotype IgG

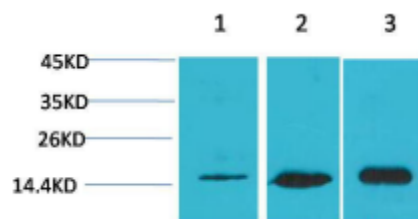
Storage -20°C, Avoid freeze/ thaw cycles

Applications WB;IHC

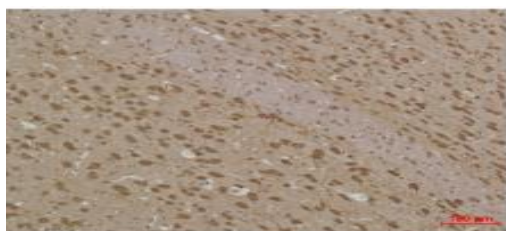
Concentration 1 mg/mL

Note: Centrifuge before opening to ensure complete recovery of vial contents.

Images



Western blot analysis of 1) Hela, 2) 3T3, 3) Rat Brain Tissue with LC3B Rabbit Polyclonal antibody diluted at 1:2,000.



Immunohistochemical analysis of paraffin-embedded Rat Brain Tissue using LC3B Rabbit Polyclonal antibody diluted at 1:500.

Immunogen Information

Immunogen Recombinant Protein

Swissprot Q9GZQ8

Synonyms ATG8F antibody, MAP1 light chain 3 like protein 2 antibody, MAP1A/MAP1BLC3 B antibody.

Product Information

Observed MW 14-16 kDa

Buffer PBS with 0.02% sodium azide and 50% glycerol pH 7.4

Dilution WB:1/1000-2000;IHC:1/200-500.

Other applications have not been tested. Optimal dilutions/concentrations should be determined by the end user.

Background

Autophagy marker Light Chain 3 (LC3) was originally identified as a subunit of microtubule-associated proteins 1A and 1B (termed MAP1LC3).

Research Use

For research use only, not for use in diagnostic procedure.

Legend

Applications: WB-Western Blot; IHC-Immunohistochemistry; IF-Immunofluorescence; IP-Immunoprecipitation; FC-Flow cytometry;ChIP-Chromatin Immunoprecipitation

Reactivity: H-Human; R-Rat; M-Mouse; Mk-Monkey; Dg-Dog; Ch-Chicken; Hm-Hamster; Rb-Rabbit; Sh- Sheep; Pg-Pig; Z-Zebrafish;X-Xenopus; C-Cow.

Please contact Origin Diagnostics and Research for further assistance

www.originlab.in

info@originlab.in

+91-7736237778