

# PDGF-A Rabbit Polyclonal Antibody

OPR3164

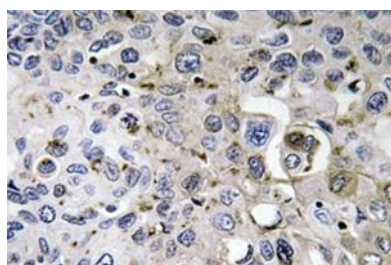
<b>Reactivity</b>	H, M, R	<b>Storage</b>	-20°C, Avoid freeze / thaw cycles
<b>Host</b>	Rabbit	<b>Applications</b>	WB;IHC;IF;ELISA
<b>Isotype</b>	IgG	<b>Concentration</b>	1 mg/mL

Note: Centrifuge before opening to ensure complete recovery of vial contents.

## Images



Western Blot analysis of various cells using PDGF-A Polyclonal Antibody



Immunohistochemistry analysis of PDGF-A antibody in paraffin-embedded human lung carcinoma tissue.

## Immunogen Information

<b>Immunogen</b>	synthesized peptide derived from human PDGF-A. AA range:105-154 range:61-110
<b>Swissprot</b>	P04085

## Product Information

<b>Observed MW</b>	17KD
<b>Buffer</b>	PBS containing 50% glycerol, 0.5% BSA and 0.02% sodium azide.
<b>Dilution</b>	WB: 1/500-1/2000, IHC:1/100-1/300, ELISA: 1/40000.

Other applications have not been tested. Optimal dilutions/concentrations should be determined by the end user

## Background

platelet derived growth factor subunit A(PDGFA) Homo sapiens This gene encodes a member of the protein family comprised of both platelet-derived growth factors (PDGF) and vascular endothelial growth factors (VEGF). The encoded preproprotein is proteolytically processed to generate platelet-derived growth factor subunit A, which can homodimerize, or alternatively, heterodimerize with the related platelet-derived growth factor subunit B. These proteins bind and activate PDGF receptor tyrosine kinases, which play a role in a wide range of developmental processes. Alternative splicing results in multiple transcript variants.

## Research Use

For research use only, not for use in diagnostic procedure

## Legend

Applications: WB-Western Blot; IHC-Immunohistochemistry; IF-Immunofluorescence; IP-Immunoprecipitation; FC-Flow cytometry; ChIP-Chromatin Immunoprecipitation

Reactivity: H-Human; R-Rat; M-Mouse; Mk-Monkey; Dg-Dog; Ch-Chicken; Hm-Hamster; Rb-Rabbit; Sh- Sheep; Pg-Pig; Z- Zebrafish; X-Xenopus; C-Cow,Fs- fish.

Please contact Origin Diagnostics and Research for further assistance

[www.originlab.in](http://www.originlab.in) [info@originlab.in](mailto:info@originlab.in) +91-7736237778

