

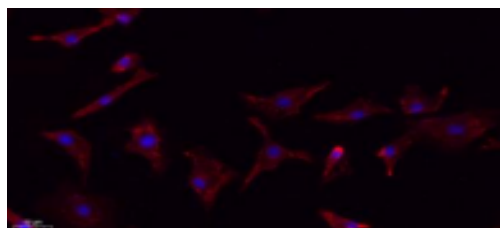
MMP-9 Rabbit Polyclonal Antibody

OPR2420

Reactivity	H,M,R	Storage	-20°C, Avoid freeze/ thaw cycles
Host	Rabbit	Applications	WB;IHC;IF;ELISA
Isotype	IgG	Concentration	1 mg/mL

Note: Centrifuge before opening to ensure complete recovery of vial contents.

Images



Immunofluorescence analysis of A549. 1, primary Antibody (red) was diluted at 1:200 (4°C overnight). 2, Goat Anti Rabbit IgG (H&L) - Alexa Fluor 594 Secondary antibody was diluted at 1:1000 (room temperature, 50 minute). 3, Picture B: DAPI (blue) 10 minute.

Immunogen Information

Immunogen The antiserum was produced against synthesized peptide derived from human MMP-9.

AA range: 651-700

Swissprot P14780

Synonyms MMP9; CLG4B; Matrix metalloproteinase-9; MMP-9; 92 kDa gelatinase; 92 kDa type IV collagenase; Gelatinase B; GELB

Product Information

Observed MW 78 kDa

Buffer PBS containing 50% glycerol, 0.5% BSA and 0.02% sodium azide

Dilution WB: 1/500; 1/2000; IHC-p: 1:100-300; IF: 1:100-300; ELISA: 1/20000

Other applications have not been tested. Optimal dilutions/concentrations should be determined by the end user.

Background

Matrix metalloproteinase 9 (MMP9) Homo sapiens Proteins of the matrix metalloproteinase (MMP) family are involved in the breakdown of extracellular matrix in normal physiological processes, such as embryonic development, reproduction, and tissue remodeling, as well as in disease processes, such as arthritis and metastasis. Most MMPs are secreted as inactive proproteins which are activated when cleaved by extracellular proteinases. The enzyme encoded by this gene degrades type IV and V collagens. Studies in rhesus monkeys suggest that the enzyme is involved in IL-8-induced mobilization of hematopoietic progenitor cells from bone marrow, and murine studies suggest a role in tumor-associated tissue remodeling.

Research Use

For research use only, not for use in diagnostic procedure.

Legend

Applications: WB-Western Blot; IHC-Immunohistochemistry; IF-Immunofluorescence; IP-Immunoprecipitation; FC-Flow cytometry; ChIP-Chromatin Immunoprecipitation

Reactivity: H-Human; R-Rat; M-Mouse; Mk-Monkey; Dg-Dog; Ch-Chicken; Hm-Hamster; Rb-Rabbit; Sh-Sheep; Pg-Pig; Z-Zebrafish; X-Xenopus; C-Cow.

Please contact Origin Diagnostics and Research for further assistance

www.originlab.in

info@originlab.in

+91-7736237778