

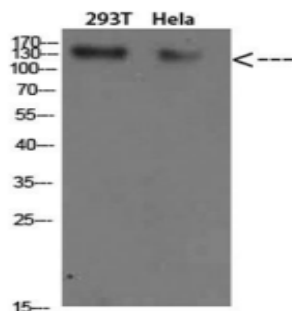
COLLAGEN I Rabbit Polyclonal Antibody

OPR8487

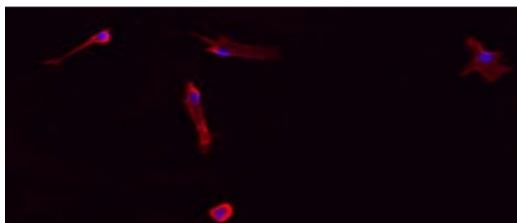
Reactivity	H,R,M	Storage	-20°C,Avoid freeze/ thaw cycles
Host	Rabbit	Applications	WB;IF;ELISA
Isotype	IgG	Concentration	1 mg/mL

Note: Centrifuge before opening to ensure complete recovery of vial contents.

Images



Western Blot analysis of 293T HeLa cells using Collagen I Polyclonal Antibody diluted at 1:500. Secondary antibody was diluted at 1:20000



Immunofluorescence analysis of A549. 1,primary Antibody(red) was diluted at 1:200(4°C overnight). 2, Goat Anti Rabbit IgG (H&L) - Alexa Fluor 594 Secondary antibody was diluted at 1:1000(room temperature, 50minute)

Immunogen Information

Immunogen	Synthesized peptide derived from Collagen I. AA range: 1200-1217
Swissprot	P08123/P02452
Synonyms	collagen, type I, alpha 2

Product Information

Observed MW	135 kDa
Buffer	PBS containing 50% glycerol, 0.5% BSA and 0.02% sodium azide
Dilution	WB :1:500-2000 IF:1:100-300 ELISA :1:5000-20000

Other applications have not been tested. Optimal dilutions/concentrations should be determined by the end user.

Background

This gene encodes the pro-alpha2 chain of type I collagen whose triple helix comprises two alpha1 chains and one alpha 2 chain.Type I is a fibril-forming collagen found in most connective tissues and is abundant in bone, cornea, dermis and tendon. Mutations in this gene are associated with osteogenesis imperfecta types I-IV, Ehlers-Danlos syndrome type VIIB, recessive Ehlers-Danlos syndrome Classical type, idiopathic osteoporosis, and a typical Marfan syndrome. Symptoms associated with mutations in this gene, however, tend to be less severe than mutations in the gene for the alpha1 chain of type I collagen (COL1A1) reflecting the different role of alpha 2 chains in matrix integrity. Three transcripts, resulting from the use of alternate polyadenylation signals, have been identified for this gene.

Research Use

For research use only, not for use in diagnostic procedure.

Legend

Applications: WB-Western Blot; IHC-Immunohistochemistry; IF-Immunofluorescence; IP-Immunoprecipitation; FC-Flow cytometry;ChIP-Chromatin Immunoprecipitation

Reactivity: H-Human; R-Rat; M-Mouse; Mk-Monkey; Dg-Dog; Ch-Chicken; Hm-Hamster; Rb-Rabbit; Sh- Sheep; Pg-Pig;Z-Zebrafish;X-Xenopus; C-Cow.

Please contact Origin Diagnostics and Research for further assistance

www.originlab.in

info@originlab.in

+91-7736237778