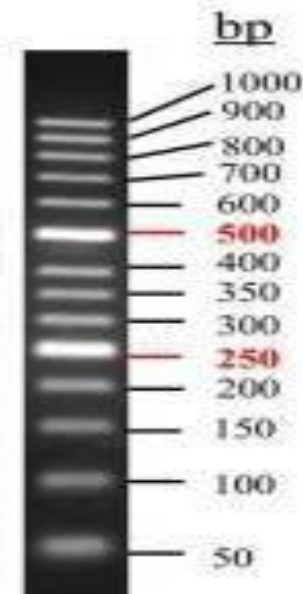


Ver.25021

50bp DNA Ladder

OMD108-01

Description: The ladder consists of 14 double-stranded DNA bands that are suitable as molecular weight standards for agarose gel electrophoresis. The product is ready-to-use; it is premixed with 1X Loading Buffer for direct loading 5 μ L on agarose gel electrophoresis. The ladder is composed of 14 individual DNA fragments (in base pairs): 1000, 900, 800, 700, 600, 500, 400, 350, 300, 250, 200, 150, 100, and 50. It contains two intense bands (500bp and 250bp) for easy orientation. To load 5 μ L of the product will provide 40ng per DNA fragment with two intense fragments of 100ng.



2.5 % agarose
5 μ L product

Volume: 250 μ L

Protocol

- 1) Directly load 5 μ L on the agarose gel (load 1 μ L per 1mm gel lane).
- 2) Electrophoresis condition: 2.5% agarose gel, 4-10V/cm voltage.
- 3) DNA marker can be visualized using Ethidium bromide under UV light.

Recommendations

- 1) Directly use, do not heat before loading.
- 2) Please use new agarose gel and change electrophoresis buffer in time, so as not to affect the electrophoresis results.

Storage: -20°C for 2 years