

# NRAM2 Rabbit Polyclonal Antibody

OPR14450

**Reactivity** H,M,R

**Host** Rabbit

**Isotype** IgG

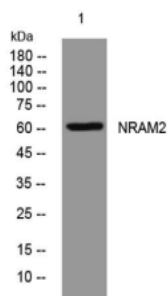
**Storage** -20 °C, Avoid freeze/ thaw cycles

**Applications** WB

**Concentration** 1 mg/mL

Note: Centrifuge before opening to ensure complete recovery of vial contents.

## Images



Western blot analysis of lysates from A431 cells, primary antibody was diluted at 1:1000, 4°C overnight.

## Immunogen Information

**Immunogen** Synthesized peptide derived from human NRAM2  
AA range: 474-524

**Swissprot** P49281

**Synonyms** Natural resistance-associated macrophage protein 2 (NRAMP 2) (Divalent cation transporter 1) (Divalent metal transporter 1) (DMT-1)

## Product Information

**Observed MW** 60 kDa

**Buffer** PBS containing 50% glycerol, 0.5% BSA and 0.02% sodium azide

**Dilution** WB:1:500-2000.

Other applications have not been tested. Optimal dilutions/concentrations should be determined by the end user.

## Background

This gene encodes a member of the solute carrier family 11 protein family. The product of this gene transports divalent metals and is involved in iron absorption. Mutations in this gene are associated with hypochromic microcytic anemia with iron overload. A related solute carrier family 11 protein gene is located on chromosome 2. Multiple transcript variants encoding different isoforms have been found for this gene.

## Research Use

For research use only, not for use in diagnostic procedure.

## Legend

Applications: WB-Western Blot; IHC-Immunohistochemistry; IF-Immunofluorescence; IP-Immunoprecipitation; FC-Flow cytometry;ChIP-Chromatin Immunoprecipitation

Reactivity: H-Human; R-Rat; M-Mouse; Mk-Monkey; Dg-Dog; Ch-Chicken; Hm-Hamster; Rb-Rabbit; Sh- Sheep; Pg-Pig; Z-Zebrafish;X-Xenopus; C-Cow.

Please contact Origin Diagnostics and Research for further assistance

[www.originlab.in](http://www.originlab.in)

[info@originlab.in](mailto:info@originlab.in)

+91-7736237778