

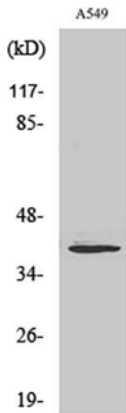
# Myogenin Rabbit Polyclonal Antibody

OPR2878

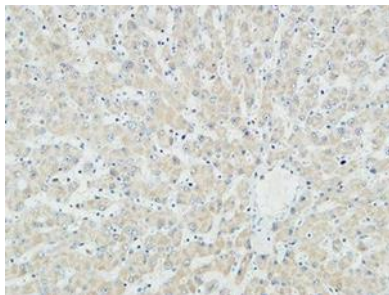
<b>Reactivity</b>	H, M, R, Pg	<b>Storage</b>	-20°C, Avoid freeze / thaw cycles
<b>Host</b>	Rabbit	<b>Applications</b>	WB;IHC;IF;ELISA
<b>Isotype</b>	IgG	<b>Concentration</b>	1 mg/mL

Note: Centrifuge before opening to ensure complete recovery of vial contents.

## Images



Western Blot analysis of various cells using Myogenin Polyclonal Antibody cells



Immunohistochemical analysis of paraffin-embedded Human liver. 1, Antibody was diluted at 1:100 (4° overnight).2, High-pressure and temperature EDTA, pH8.0 was used for antigen retrieval.3,Secondary antibody was diluted at 1:200(room temperature, 30min).

## Immunogen Information

<b>Immunogen</b>	synthesized peptide derived from human Myogenin. AA range:50-99
<b>Swissprot</b>	P15173

## Product Information

<b>Observed MW</b>	39kD
<b>Buffer</b>	PBS containing 50% glycerol, 0.5% BSA and 0.02% sodium azide.
<b>Dilution</b>	WB: 1/500 – 1/2000 IHC-p :100-300 ELISA -1/10000

Other applications have not been tested. Optimal dilutions/concentrations should be determined by the end user

## Background

Myogenin is a muscle-specific transcription factor that can induce myogenesis in a variety of cell types in tissue culture. It is a member of a large family of proteins related by sequence homology, the helix-loop-helix (HLH) proteins. It is essential for the development of functional skeletal muscle.

## Research Use

For research use only, not for use in diagnostic procedure

## Legend

Applications: WB-Western Blot; IHC-Immunohistochemistry; IF-Immunofluorescence; IP-Immunoprecipitation; FC-Flow cytometry; ChIP-Chromatin Immunoprecipitation

Reactivity: H-Human; R-Rat; M-Mouse; Mk-Monkey; Dg-Dog; Ch-Chicken; Hm-Hamster; Rb-Rabbit; Sh- Sheep; Pg-Pig; Z- Zebrafish; X-Xenopus; C-Cow, Fs- fish.