

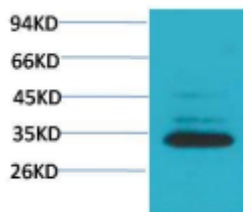
Caspase 3 Rabbit Polyclonal Antibody

OPR1017

Reactivity	H	Storage	-20°C, Avoid freeze/ thaw cycles
Host	Rabbit	Applications	WB;IHC
Isotype	IgG	Concentration	1 mg/mL

Note: Centrifuge before opening to ensure complete recovery of vial contents.

Images



Western blot analysis of Hela with Caspase 3 Rabbit Polyclonal antibody diluted at 1:2,000.



Immunohistochemical analysis of paraffin-embedded Human Tonsil Tissue using Caspase 3 Rabbit Polyclonal antibody diluted at 1:500.

Immunogen Information

Immunogen	Recombinant Protein
Swissprot	P42574
Synonyms	APOPAIN antibody, CASP 3 antibody, CPP32 antibody, Cysteine protease CPP32 antibody.

Product Information

Observed MW	32 kDa
Buffer	PBS with 0.02% sodium azide and 50% glycerol pH 7.4
Dilution	WB:1/1000-2000;IHC:1/200-500.

Other applications have not been tested. Optimal dilutions/concentrations should be determined by the end user.

Background

Caspase-3 (CPP-32, Apoptain, Yama, SCA-1) is a critical executioner of apoptosis, as it is either partially or totally responsible for the proteolytic cleavage of many key proteins such as the nuclear enzyme poly (ADP- ribose) polymerase (PARP).

Research Use

For research use only, not for use in diagnostic procedure.

Legend

Applications: WB-Western Blot; IHC-Immunohistochemistry; IF-Immunofluorescence; IP-Immunoprecipitation; FC-Flow cytometry;ChIP-Chromatin Immunoprecipitation

Reactivity: H-Human; R-Rat; M-Mouse; Mk-Monkey; Dg-Dog; Ch-Chicken; Hm-Hamster; Rb-Rabbit; Sh- Sheep; Pg-Pig; Z-Zebrafish;X-Xenopus; C-Cow.

Please contact Origin Diagnostics and Research for further assistance

www.originlab.in

info@originlab.in

+91-7736237778