

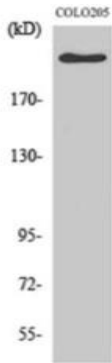
APC Rabbit Polyclonal Antibody

OPR1674

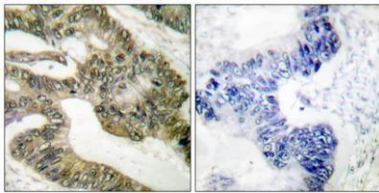
Reactivity	H,M,R	Storage	-20°C, Avoid freeze / thaw cycles
Host	Rabbit	Applications	WB; IHC; IF; ELISA
Isotype	IgG	Concentration	1 mg/mL

Note: Centrifuge before opening to ensure complete recovery of vial contents.

Images



Western Blot analysis of COLO205 cells using APC Polyclonal Antibody diluted at 1:500



Immunohistochemistry analysis of paraffin-embedded human colon carcinoma tissue, using APC Antibody. The picture on the right is blocked with the synthesized peptide.

Immunogen Information

Immunogen The antiserum was produced against synthesized peptide derived from human APC. AA range: 2794-2843

Swissprot P25054

Synonyms APC; DP2.5; Adenomatous polyposis coli protein; Protein APC; Deleted in polyposis 2.5.

Product Information

Observed MW 310kD

Buffer PBS containing 50% glycerol, 0.5% BSA and 0.02% sodium azide.

Dilution WB: 1/500 - 1/2000, IHC: 1/100 - 1/300, IF: 1/200 - 1/1000, ELISA: 1/40000

Other applications have not been tested. Optimal dilutions/concentrations should be determined by the end user

Background

This gene encodes a tumor suppressor protein that acts as an antagonist of the Wnt signaling pathway. It is also involved in other processes including cell migration and adhesion, transcriptional activation, and apoptosis. Defects in this gene cause familial adenomatous polyposis (FAP), an autosomal dominant pre-malignant disease that usually progresses to malignancy. Disease-associated mutations tend to be clustered in a small region designated the mutation cluster region (MCR) and result in a truncated protein product.

Research Use

For research use only, not for use in diagnostic procedure

Legend

Applications: WB-Western Blot; IHC-Immunohistochemistry; IF-Immunofluorescence; IP-Immunoprecipitation; FC-Flow cytometry; ChIP-Chromatin Immunoprecipitation

Reactivity: H-Human; R-Rat; M-Mouse; Mk-Monkey; Dg-Dog; Ch-Chicken; Hm-Hamster; Rb-Rabbit; Sh- Sheep; Pg-Pig; Z- Zebrafish; X-Xenopus; C-Cow,Is-Insect,Ys- yeast.

Please contact Origin Diagnostics and Research for further assistance

www.originlab.in

info@originlab.in

+91-7736237778