

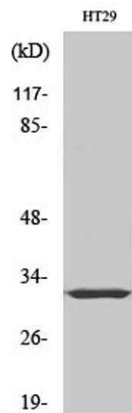
# PMEPA1 Rabbit Polyclonal Antibody

OPR3238

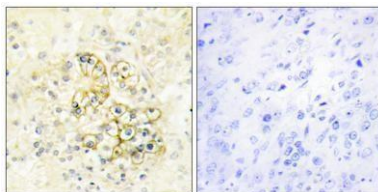
<b>Reactivity</b>	H,M,R	<b>Storage</b>	-20°C, Avoid freeze / thaw cycles
<b>Host</b>	Rabbit	<b>Applications</b>	WB; IHC; IF; ELISA
<b>Isotype</b>	IgG	<b>Concentration</b>	1 mg/mL

**Note:** Centrifuge before opening to ensure complete recovery of vial contents.

## Images



Western Blot analysis of HT29 cells using PMEPA1 Polyclonal Antibody diluted at 1:500



Immunohistochemistry analysis of paraffin-embedded human prostate tissue, using TMEPA Antibody. The picture on the right is blocked with the synthesized peptide.

## Immunogen Information

<b>Immunogen</b>	The antiserum was produced against synthesized peptide derived from human TMEPA. AA range:101-150
<b>Swissprot</b>	Q969W9
<b>Synonyms</b>	PMEPA1; STAG1; TMEPAI; Transmembrane prostate androgen-induced protein; Solid tumor-associated 1 protein

## Product Information

<b>Buffer</b>	PBS containing 50% glycerol, 0.5% BSA and 0.02% sodium azide.
<b>Dilution</b>	WB: 1/500 – 1/2000, IHC: 1/100 – 1/300; IF: 1/200 – 1/1000, ELISA: 1/20000

Other applications have not been tested. Optimal dilutions/concentrations should be determined by the end user

## Background

This gene encodes a transmembrane protein that contains a Smad interacting motif (SIM). Expression of this gene is induced by androgens and transforming growth factor beta, and the encoded protein suppresses the androgen receptor and transforming growth factor beta signaling pathways through interactions with Smad proteins. Overexpression of this gene may play a role in multiple types of cancer. Alternatively spliced transcript variants encoding multiple isoforms have been observed for this gene.

## Research Use

For research use only, not for use in diagnostic procedure

## Legend

Applications: WB-Western Blot; IHC-Immunohistochemistry; IF-Immunofluorescence; IP-Immunoprecipitation; FC-Flow cytometry; ChIP-Chromatin Immunoprecipitation  
Reactivity: H-Human; R-Rat; M-Mouse; Mk-Monkey; Dg-Dog; Ch-Chicken; Hm-Hamster; Rb-Rabbit; Sh- Sheep; Pg-Pig; Z- Zebrafish; X-Xenopus; C-Cow,Is-Insect,Ys- yeast.

Please contact Origin Diagnostics and Research for further assistance

[www.originlab.in](http://www.originlab.in)

[info@originlab.in](mailto:info@originlab.in)

+91-7736237778