

Nrf2 Rabbit Polyclonal Antibody

OPR2985

Reactivity H,M,R

Host Rabbit

Isotype IgG

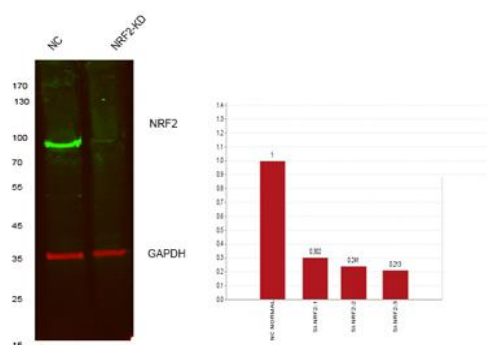
Storage -20 °C, Avoid freeze/ thaw cycles

Applications WB;IHC;IF;ELISA

Concentration 1 mg/mL

Note: Centrifuge before opening to ensure complete recovery of vial contents.

Images



Western blot analysis of lysates from 1)Hela cell,2)Hela cells knockdown by NRF2-siRNA(F:CAUUGAUGUUUCUGAUCUATT R:UAGAUCAGAAACAUCAAUGTT),(Green) primary antibody was diluted at 1:1000, 4°over night, Dylight 800 secondary antibody

Immunogen Information

Immunogen The antiserum was produced against synthesized peptide derived from human Nrf2. AA range:556-605

Swissprot Q16236

Synonyms NFE2L2; NRF2; Nuclear factor erythroid 2-related factor 2; NF-E2-related factor 2; NFE2-related factor 2; HEBP1; Nuclear factor; erythroid derived 2,like 2

Product Information

Observed MW 75-100 kDa

Buffer PBS containing 50% glycerol, 0.5% BSA and 0.02% sodium azide

Dilution WB: 1/500-1/2000;IHC: 1/100-1/300; IF: 1/200- 1/1000;ELISA: 1/40000.

Other applications have not been tested. Optimal dilutions/concentrations should be determined by the end user.

Background

This gene encodes a transcription factor which is a member of a small family of basic leucine zipper (bZIP) proteins. The encoded transcription factor regulates genes which contain antioxidant response elements (ARE) in their promoters; many of these genes encode proteins involved in response to injury and inflammation which includes the production of free radicals. Multiple transcript variants encoding different isoforms have been characterized for this gene.

Research Use

For research use only, not for use in diagnostic procedure.

Legend

Applications: WB-Western Blot; IHC-Immunohistochemistry; IF-Immunofluorescence; IP-Immunoprecipitation; FC-Flow cytometry;ChIP-Chromatin Immunoprecipitation

Reactivity: H-Human; R-Rat; M-Mouse; Mk-Monkey; Dg-Dog; Ch-Chicken; Hm-Hamster; Rb-Rabbit; Sh- Sheep; Pg-Pig; Z-Zebrafish;X-Xenopus; C-Cow.

Please contact Origin Diagnostics and Research for further assistance

www.originlab.in

info@originlab.in

+91-7736237778