

Nrf2 Rabbit Polyclonal Antibody

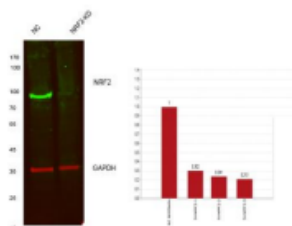
OPR2985

Reactivity H,R,M
Host Rabbit
Isotype IgG

Storage -20°C, Avoid freeze / thaw cycles
Applications WB;ELISA,IHC,IF
Concentration 1 mg/mL

Note: Centrifuge before opening to ensure complete recovery of vial contents.

Images



Immunogen Information

Immunogen The antiserum was produced against synthesized peptide derived from human Nrf2.
AA range:556-605
Swissprot Q16236
Synonyms NFE2L2; NRF2; Nuclear factor erythroid 2-related factor 2; NF-E2-related factor 2; NFE2-related factor 2; HEBP1; Nuclear factor; erythroid derived 2, like 2

Product Information

Observed MW 75- 100 kDa
Buffer PBS containing 50% glycerol, 0.5% BSA and 0.02% sodium azide.
Dilution WB: 1/500 - 1/2000,IHC: 1/100 - 1/300, IF: 1/200 - 1/1000,ELISA: 1/40000

Other applications have not been tested. Optimal dilutions/concentrations should be determined by the end user

Background

This gene encodes a transcription factor which is a member of a small family of basic leucine zipper (bZIP) proteins. The encoded transcription factor regulates genes which contain antioxidant response elements (ARE) in their promoters; many of these genes encode proteins involved in response to injury and inflammation which includes the production of free radicals. Multiple transcript variants encoding different isoforms have been characterized for this gene

Research Use

For research use only, not for use in diagnostic procedure.

Legend

Applications: WB-Western Blot; IHC-Immunohistochemistry; IF-Immunofluorescence; IP-Immunoprecipitation; FC-Flow cytometry; ChIP-Chromatin Immunoprecipitation

Reactivity: H-Human; R-Rat; M-Mouse; Mk-Monkey; Dg-Dog; Ch-Chicken; Hm-Hamster; Rb-Rabbit; Sh- Sheep; Pg-Pig; Z-Zebrafish; X-Xenopus; C-Cow.

Please contact Origin Diagnostics and Research for further assistance

www.originlab.in

info@originlab.in

+91-7736237778