

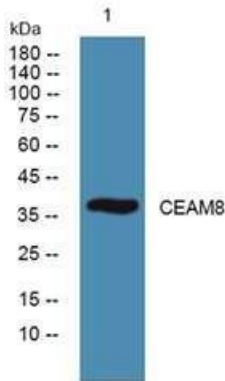
# CEAM8 Rabbit Polyclonal Antibody

OPR10857

<b>Reactivity</b>	H, R, M	<b>Storage</b>	-20°C, Avoid freeze / thaw cycles.
<b>Host</b>	Rabbit	<b>Applications</b>	WB; ELISA
<b>Isotype</b>	IgG	<b>Concentration</b>	1 mg/mL

Note: Centrifuge before opening to ensure complete recovery of vial contents.

## Images



Western blot analysis of lysates from K562 cells, primary antibody was diluted at 1:1000, 4° over night.

## Immunogen Information

**Immunogen** Synthesized peptide derived from part region of human protein  
**Swissprot** P31997

## Product Information

**Buffer** PBS containing 50% glycerol, 0.5% BSA and 0.02% sodium azide.

**Dilution** WB;1:500-2000, ELISA;1:5000-20000.

**Observed MW** 38 kDa

Other applications have not been tested. Optimal dilutions/concentrations should be determined by the end user.

## Background

Similarity: Belongs to the immunoglobulin superfamily. CEA family., similarity: Contains 1 Ig-like V-type (immunoglobulin-like) domain., similarity: Contains 2 Ig-like C2-type (immunoglobulin-like) domains., tissue specificity: Expressed in leukocytes of chronic myeloid Leukemia patients and bone marrow.,

## Research Use

For research use only, not for use in diagnostic procedure

## Legend

Applications: WB-Western Blot; IHC-Immunohistochemistry; IF-Immunofluorescence; IP-Immunoprecipitation; FC-Flow cytometry; CHIP-Chromatin Immunoprecipitation

Reactivity: H-Human; R-Rat; M-Mouse; Mk-Monkey; Dg-Dog; Ch-Chicken; Hm-Hamster; Rb-Rabbit; Sh- Sheep; Pg-Pig; Z-Zebrafish; X-Xenopus; C-Cow.

Please contact Origin Diagnostics and Research for further assistance

[www.originlab.in](http://www.originlab.in)

[info@originlab.in](mailto:info@originlab.in)

+91-7736237778