

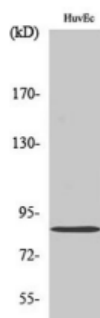
Mfn2 Rabbit Polyclonal Antibody

OPR2784

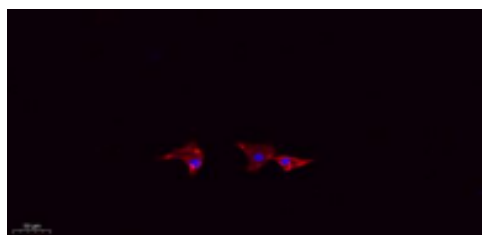
Reactivity	H,M,R	Storage	-20°C, Avoid freeze/ thaw cycles
Host	Rabbit	Applications	WB;IHC;IF;ELISA
Isotype	IgG	Concentration	1 mg/mL

Note: Centrifuge before opening to ensure complete recovery of vial contents.

Images



Western Blot analysis of various cells using Mfn2 Polyclonal Antibody diluted at 1:1000.



Immunofluorescence analysis of A549. 1, primary Antibody (red) was diluted at 1:200 (4°C overnight). 2, Goat Anti Rabbit IgG (H&L) - Alexa Fluor 594 Secondary antibody was diluted at 1:1000 (room temperature, 50min). 3, Picture B: DAPI (blue) 10minutes.

Immunogen Information

Immunogen The antiserum was produced against synthesized peptide derived from human Mfn2.

AA range:354-403

Swissprot O95140

Synonyms MFN2; CPRP1; KIAA0214; Mitofusin-2; Transmembrane GTPase MFN2

Product Information

Observed MW 86 kDa

Buffer PBS containing 50% glycerol, 0.5% BSA and 0.02% sodium azide

Dilution WB:1/500-1/2000; IHC-p:1:100-300; ELISA:1/20000

Other applications have not been tested. Optimal dilutions/concentrations should be determined by the end user.

Background

This gene encodes a mitochondrial membrane protein that participates in mitochondrial fusion and contributes to the maintenance and operation of the mitochondrial network. This protein is involved in the regulation of vascular smooth muscle cell proliferation, and it may play a role in the pathophysiology of obesity. Mutations in this gene cause Charcot-Marie-Tooth disease type 2A2, and hereditary motor and sensory neuropathy VI, which are both disorders of the peripheral nervous system. Defects in this gene have also been associated with early-onset stroke. Two transcript variants encoding the same protein have been identified.

Research Use

For research use only, not for use in diagnostic procedure.

Legend

Applications: WB-Western Blot; IHC-Immunohistochemistry; IF-Immunofluorescence; IP-Immunoprecipitation; FC-Flow cytometry;ChIP-Chromatin Immunoprecipitation

Reactivity: H-Human; R-Rat; M-Mouse; Mk-Monkey; Dg-Dog; Ch-Chicken; Hm-Hamster; Rb-Rabbit; Sh- Sheep; Pg-Pig; Z-Zebrafish;X-Xenopus; C-Cow.

Please contact Origin Diagnostics and Research for further assistance

www.originlab.in

info@originlab.in

+91-7736237778