

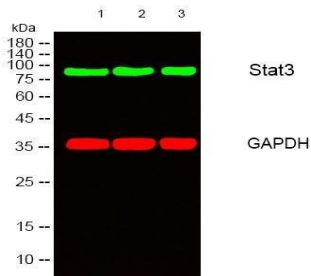
Stat3 Rabbit Polyclonal Antibody

OPR3511

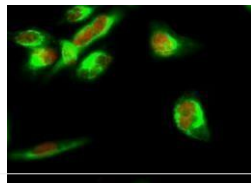
Reactivity	H,M,R	Storage	-20°C, Avoid freeze / thaw cycles
Host	Rabbit	Applications	WB; IHC; IF; ELISA
Isotype	IgG	Concentration	1 mg/mL

Note: Centrifuge before opening to ensure complete recovery of vial contents.

Images



Western blot analysis of lysates from 1) HepG2-UV, 2) K562, 3) AD293, 4) PC-3 cells, (Green) primary antibody was diluted at 1:1000, 4°C over night, secondary antibody was diluted at 1:10000, 37°C 1hour. (Red) GAPDH Monoclonal Antibody (2B8) was diluted at 1:5000 as loading control, 4°C over night, secondary antibody was diluted at 1:10000, 37°C 1 hour.



Immunofluorescence analysis of Hela cell. 1, Stat3 Rabbit Polyclonal Antibody (red) was diluted at 1:200 (4°C overnight). β -tubulin Monoclonal Antibody (M7) (green) was diluted at 1:200 (4°C overnight). 2, Goat Anti Rabbit Alexa Fluor 594 diluted at 1:1000 (room temperature, 50 minutes). Goat Anti Mouse Alexa Fluor 488 was diluted at 1:1000 (room temperature, 50 minutes).

Immunogen Information

Immunogen	The antiserum was produced against synthesized peptide derived from human STAT3. AA range:672-721
Synonyms	STAT3; APRF; Signal transducer and activator of transcription 3; Acute-phase response factor

Product Information

Observed MW	88 kD
Buffer	PBS containing 50% glycerol, 0.5%BSA and 0.02% sodium azide.
Dilution	WB:-1/500-1/2000, IHC:- 1/100 - 1/300, ELISA:- 1/5000, IF:- 1:50 -200

Other applications have not been tested. Optimal dilutions/concentrations should be determined by the end user

Background

The protein encoded by this gene is a member of the STAT protein family. In response to cytokines and growth factors, STAT family members are phosphorylated by the receptor associated kinases, and then form homo- or heterodimers that translocate to the cell nucleus where they act as transcription activators. This protein is activated through phosphorylation in response to various cytokines and growth factors including IFNs, EGF, IL5, IL6, HGF, LIF and BMP2. This protein mediates the expression of a variety of genes in response to cell stimuli, and thus plays a key role in many cellular processes such as cell growth and apoptosis. The small GTPase Rac1 has been shown to bind and regulate the activity of this protein. PIAS3 protein is a specific inhibitor of this protein. Mutations in this gene are associated with infantile-onset multisystem autoimmune disease.

Research Use

For research use only, not for use in diagnostic procedure

Legend

Applications: WB-Western Blot; IHC-Immunohistochemistry; IF-Immunofluorescence; IP-Immunoprecipitation; FC-Flow cytometry; CHIP-Chromatin Immunoprecipitation

Reactivity: H-Human; R-Rat; M-Mouse; Mk-Monkey; Dg-Dog; Ch-Chicken; Hm-Hamster; Rb-Rabbit; Sh- Sheep; Pg-Pig; Z- Zebrafish; X-Xenopus; C-Cow,Is-Insect,Ys- yeast.

Please contact Origin Diagnostics and Research for further assistance

www.originlab.in

info@originlab.in

+91-7736237778